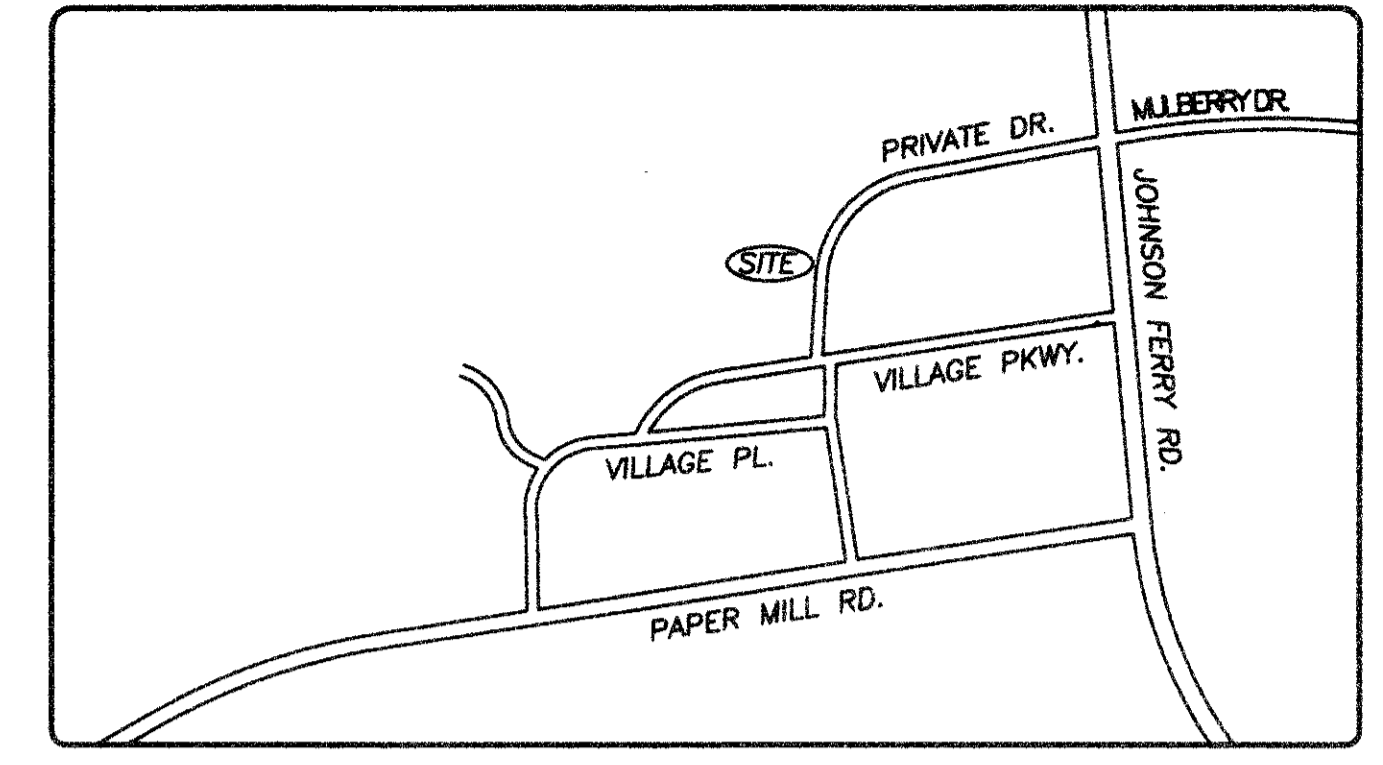


LOCATION



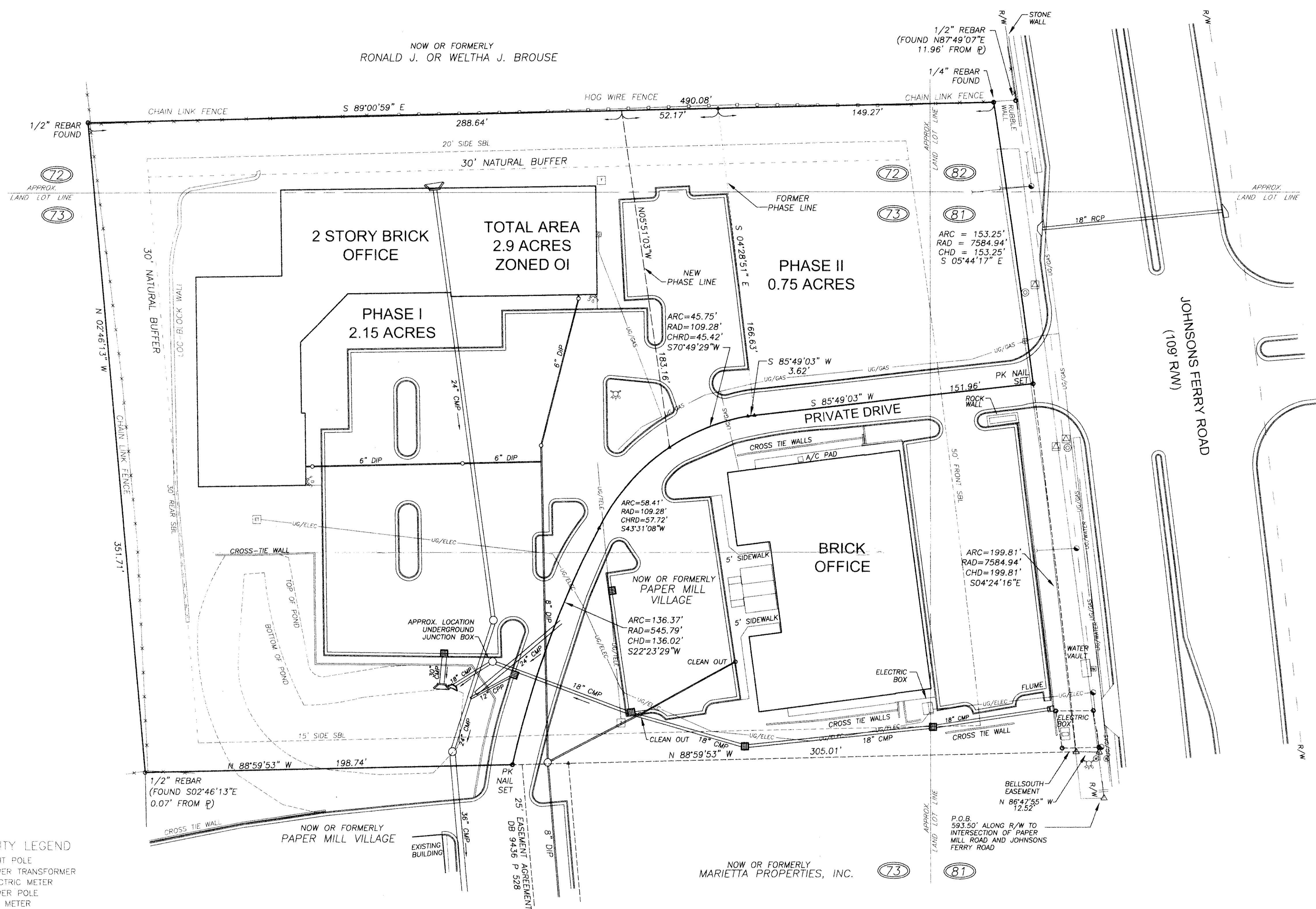
1. THIS SURVEY IS BASED ON MONUMENTATION FOUND ON SITE AND REFERENCE INFORMATION TAKEN FROM THE RECORDS OF COBB COUNTY AND OTHER SOURCES. NO TITLE SEARCH WAS CONDUCTED AND ALL MATTERS OF TITLE ARE EXCEPTED.
2. SUBDIVISION OF SUBJECT PROPERTY REQUIRES APPROVAL PURSUANT TO COBB COUNTY SUBDIVISION REGULATIONS.
3. THE FIELD DATA UPON WHICH THIS MAP OR PLAT IS BASED HAS A CLOSURE PRECISION OF 1 FOOT IN 211,326 FEET AND AN ANGULAR ERROR OF 04" PER ANGLE POINT, AND WAS ADJUSTED USING COMPASS RULE.
4. THIS MAP OR PLAT HAS BEEN CALCULATED FOR CLOSURE AND IS FOUND TO BE ACCURATE WITHIN ONE FOOT IN 81,632 FEET.
5. THIS PROPERTY IS NOT SHOWN TO BE IN A FLOOD PLAIN PER F.I.R.M. PANEL #13067 C 0060 F FOR COBB CO., GA. DATED AUG. 18, 1992.
6. THIS SURVEY SUBJECT TO ALL RIGHTS-OF-WAY AND EASEMENTS, INCLUDING ANY THAT MAY EXIST WITHOUT RECORD.
7. THIS SURVEY WAS PERFORMED USING TOPCON CTS2 TOTAL STATION EQUIPMENT AND TDS DATA COLLECTION SOFTWARE.
8. SET BACK LINES AND 30' NATURAL BUFFER PER SITE PLAN FOR JOHNSONS FERRY ANNEX OFFICE PARK BY PAULSON MITCHELL INCORPORATED, DATED 12/07/98, LAST REVISED 6/3/99. SETBACK LINES AND BUFFER SUBJECT TO REVIEW BY COBB COUNTY. ADDITIONAL SETBACK LINES MAY APPLY.
9. THE LOCATIONS OF UNDERGROUND UTILITIES SHOWN, ARE INTENDED TO BE A GENERAL REPRESENTATION OF THE VISIBLE FIXTURES AND REFERENCED SOURCE INFORMATION. ADDITIONAL UTILITIES MAY EXIST AND ACTUAL LOCATION AND NUMBER OF THOSE SHOWN ARE NOT KNOWN. ALL UTILITIES MUST BE LOCATED BY A UTILITIES PROTECTION SERVICE PRIOR TO ANY EXCAVATION.

IF YOU DIG GEORGIA... CALL US FIRST!
UTILITIES PROTECTION CENTER
 METRO ATLANTA STATE WIDE
 1 (404) 623-4344 1 (800) 282-7411
 IT'S THE LAW!

Thomas P. Weirle
 REGISTERED PROFESSIONAL SURVEYOR
 STATE OF GEORGIA
 NUMBER 10007
 EXPIRES 12/31/04

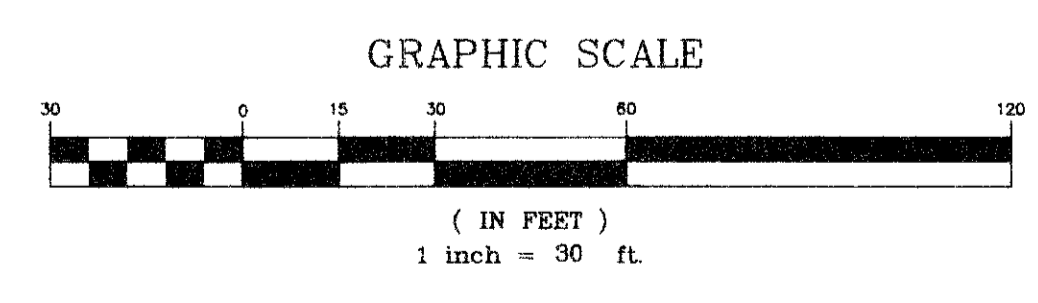
IN MY OPINION, THIS PLAT IS A CORRECT REPRESENTATION OF THE LAND PLATTED AND HAS BEEN PREPARED IN CONFORMITY WITH THE MINIMUM STANDARDS AND REQUIREMENTS OF LAW.

© COPYRIGHT 2003 BY DUE WEST SURVEYING INC., MEMBER OF THE AMERICAN CONGRESS ON SURVEYING AND MAPPING & THE SURVEYING AND MAPPING SOCIETY OF GEORGIA



- UTILITY LEGEND**
- LIGHT POLE
 - POWER TRANSFORMER
 - ⊠ ELECTRIC METER
 - POWER POLE
 - ⊞ GAS METER
 - ⊞ GAS VALVE
 - ⊞ TELEPHONE VAULT
 - ⊞ TELEPHONE PEDESTAL
 - ⊞ WATER METER
 - ⊞ WATER VALVE
 - ⊞ FIRE HYDRANT
 - ⊞ FIRE DEPT. CONNECTION
 - ⊞ TRAFFIC SIGNAL CONTROL BOX
 - ⊞ STRAIN POLE

- DRAINAGE LEGEND**
- ▭ CATCH BASIN
 - ▭ CATCH BASIN
 - ▭ HEADWALL
 - ▭ REINFORCED CONCRETE PIPE
 - ▭ CORRUGATED METAL PIPE
 - ▭ CORRUGATED PLASTIC PIPE
 - ⊞ DROP INLET
 - ⊞ MANHOLE
 - ⊞ WEIR INLET



SURVEY REFERENCES

DB 2295 P 161, DB 2365 P 479, DB 9436 P 462, ** SITE PLAN FOR JOHNSONS FERRY OFFICE ANNEX BY PAULSON MITCHELL INCORPORATED, DATED 12/07/98, LAST REVISED 6/3/99, PLAT OF PWHH, LP, HOMEBANC FSB, AND CHICAGO TITLE INSURANCE COMPANY, BY P. T. & B. ENGINEERING, DATED 04/27/87, PLAT FOR PAPER MILL VILLAGE BY P. T. & B. ENGINEERING, DATED 2/21/90

| REVISIONS | | | |
|-----------|------|-------------|----|
| NO. | DATE | DESCRIPTION | BY |
| | | | |
| | | | |
| | | | |

BOUNDARY SURVEY

**PREMIER BANK, LTLT, L.P., A GEORGIA LIMITED PARTNERSHIP,
 AND CHICAGO TITLE INSURANCE COMPANY**
 LAND LOTS 72, 73, 81 AND 82, 1st DISTRICT, 2nd SECTION
 CITY OF MARIETTA
 COBB COUNTY, GEORGIA

DUE WEST SURVEYING INC
 4041 DUE WEST RD.
 MARIETTA, GA. 30064
 (770) 423-0611

| | |
|----------|---|
| GDS | 1 |
| CPW | 1 |
| C007301F | 1 |
| 01/03/03 | 1 |
| 1 | 1 |